

The LINC logo features the letters 'LINC' in a white, sans-serif font, positioned over a stylized graphic of three curved, overlapping brushstrokes in blue, red, and yellow. The background of the slide is a light blue gradient with a large, faint, light blue brushstroke graphic.

LINC

# 12-month results with the ORCHID DCB: The Leipzig experience



 Universitätsklinikum  
Leipzig  
Anstalt öffentlichen Rechts

**Sabine Steiner**  
Department of Angiology  
University Hospital Leipzig, Germany

# Disclosure

Speaker name:

**Sabine Steiner**

I have the following potential conflicts of interest to report:

- Consulting: Bard
- Employment in industry
- Stockholder of a healthcare company
- Owner of a healthcare company
- Other(s)
  
- I do not have any potential conflict of interest

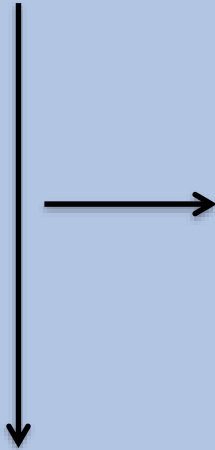
# Orchid<sup>®</sup> DCB Leipzig study

- Orchid<sup>®</sup> 0.035" PTA Balloon Catheter (Acotec Scientific Co., Ltd., Beijing, China):
  - Paclitaxel coating with a dose density of 3 $\mu$ g/mm<sup>2</sup>
  - Magnesium stearate as carrier
- Retrospective, non-randomized monocenter cohort study
- Symptomatic PAD patients undergoing femoropopliteal interventions
- Presentation of full 12 months follow up

# Orchid<sup>®</sup> DCB Leipzig study

- Pre-scheduled follow-up visits at 6 and 12 months, yearly thereafter
- Telephone contact for assessment of clinical and vital status in patients without clinical follow up visits
- Endpoints:
  - Death
  - Rutherford stage
  - Patency/Target lesion revascularization

115 patients with  
femoropopliteal lesions  
treated with Orchid DCB



Deaths: 2 patients  
No follow up information: 5 patients

110 lesions with follow up

99 patients with clinical visits  
84 lesions evaluated by ultrasound/angio  
11 patients with telephone contact only

# Baseline patient characteristics

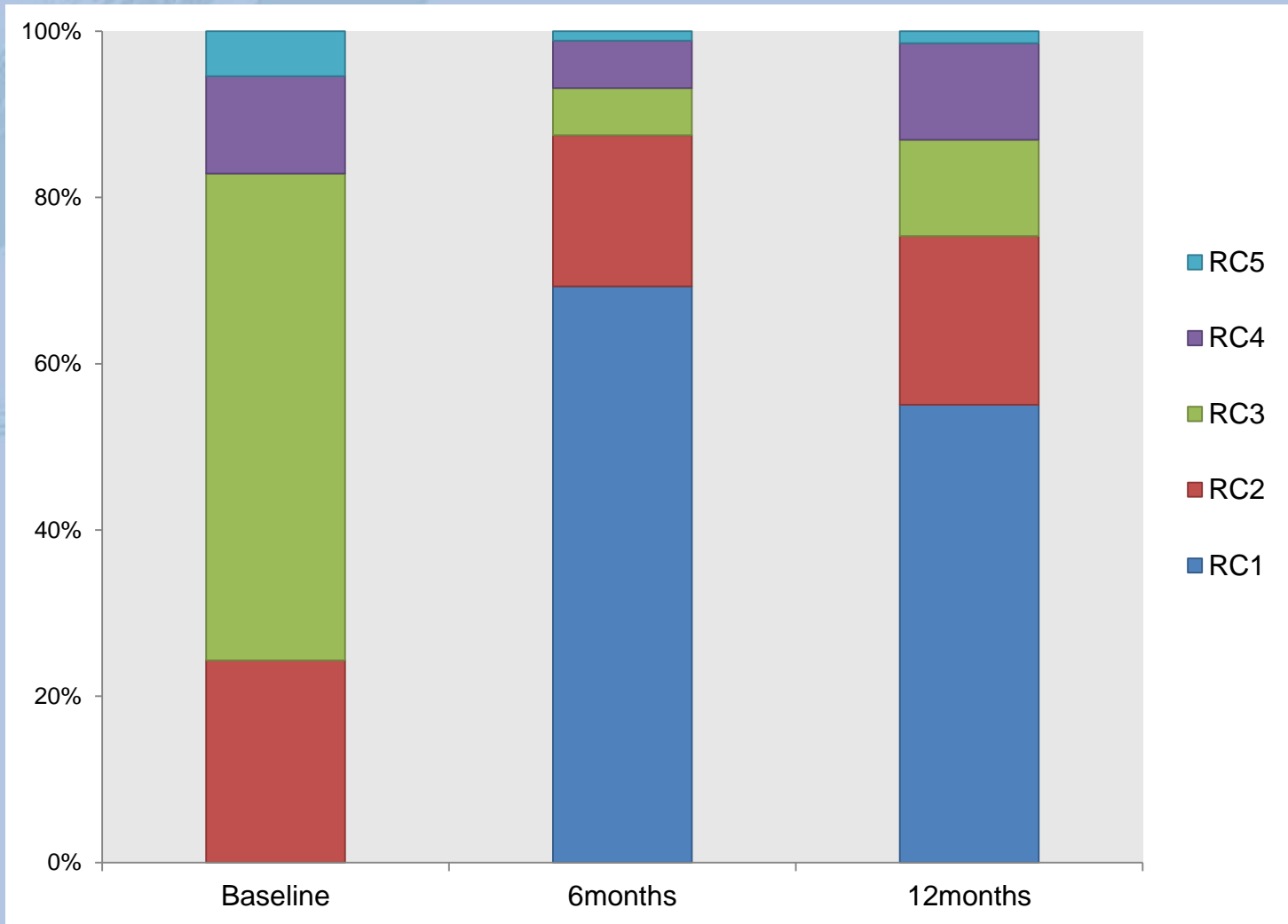
	Orchid DCB (n=115)
Age, years	69 ± 10
Female, %	33
Rutherford stage, Median	3.0
Hypertension, %	99.1
Hyperlipidemia, %	76.5
Obesity (BMI>30 kg/m <sup>2</sup> ), %	24.3
Diabetes: NIDDM, %	20
IDDM, %	25.2
Current/former smoking, %	55.7
Coronary heart disease, %	35.7
Cerebrovascular disease, %	15.7

# Lesion and interventional characteristics

	Orchid DCB (n=115)
Cumulative device length (mm)	277 ± 121
Diameter of devices (mm)	5.2 ± 0.5
Run-off vessels	2.2 ± 1.1
In-stent restenosis	28%
Treatment of vessel occlusion	53%
Dissection post PTA	47%
Stent implantation	66%
Inflow intervention	3.5%
Atherectomy/thrombectomy	27.8%
Popliteal artery treated	33%

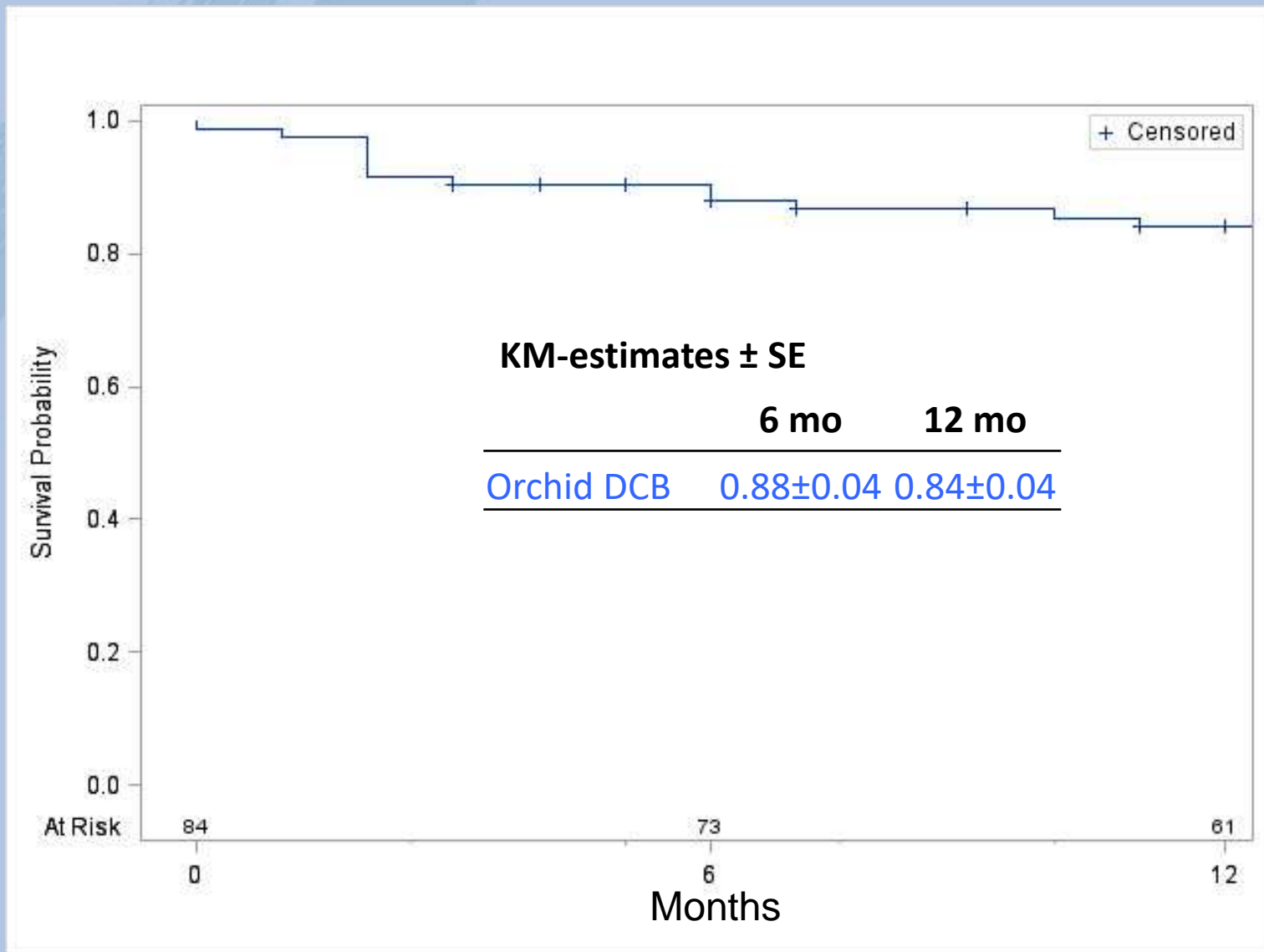
Data are given as mean±std or %.

# Rutherford classification

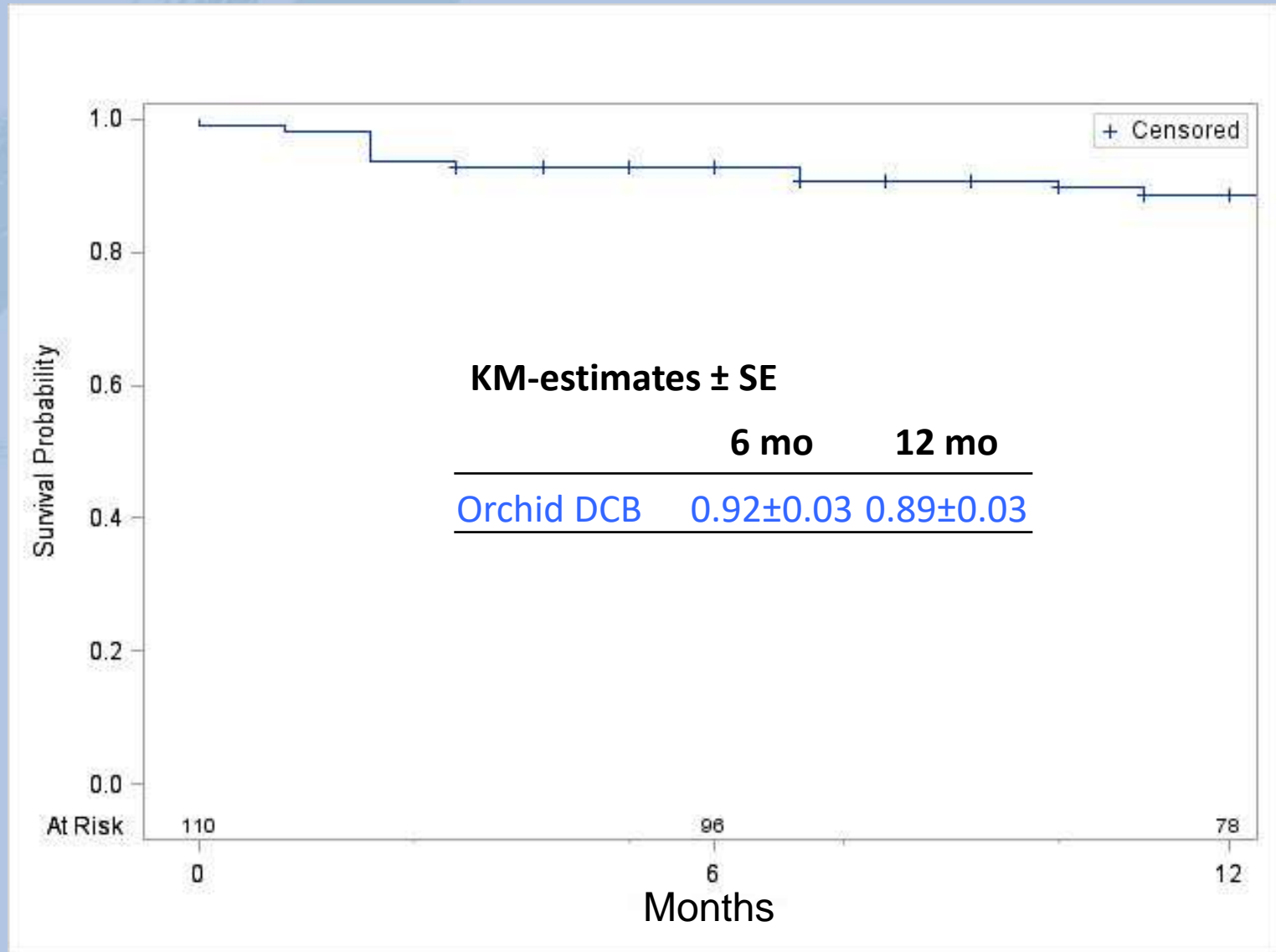




# Patency: freedom from TLR/restenosis in duplex ultrasound



# Target lesion revascularization



# Summary

- Orchid<sup>®</sup> PTA Balloon Catheter:  
Promising results in very long and complex real world lesions
- Freedom from TLR: 92% @6mo, 89% @12mo
- Patency: 88% @6mo, 84% @12mo
- Limitations of a non-randomized, monocenter cohort study design

The logo for LING, featuring the letters 'L', 'I', 'N', and 'G' in a white, sans-serif font, arranged horizontally. The letters are partially overlaid by a stylized graphic of three curved, overlapping brushstrokes in blue, red, and yellow.

# 12-month results with the ORCHID DCB: The Leipzig experience



 Universitätsklinikum  
Leipzig  
Anstalt öffentlichen Rechts

**Sabine Steiner**  
Department of Angiology  
University Hospital Leipzig, Germany